

# A VIEW FROM THE STEEPLE November 2009



The **View from the Steeple** is published monthly by The Congregational Church of Plainville, UCC.

**The Rev. Dr. Claire W. Bamberg**.....  
**Transitional Minister** Office: (860) 747-1901

**Cheryl Cone and Suzanne Colley**.....  
.....Church School Superintendents

**Matthew Bartlett**.....  
.....Director of Choirs and Organist

**Barbara Steele**..... Church Secretary  
Office Phone & Fax: (860) 747-1901

**Church Email:** congregational9486@sbcglobal.net

**Church Website:** www.UCCPlainville.org

\*\*\*\*\*

## Ministerial Musings, November 2009

This formula was one to which I referred during a recent worship service:

**Power = energy + intention** Power is energy used with intention and purpose. Energy is not something we own; it's something that we all live in. It moves around and through us. It holds a mystique because we know it exists but we can't put it in a container the way we can water. Power does not exist until we take energy and call it power. (Seasons of the Spirit, Congregational Life, October 11, 2009)

By definition, then ~ this definition ~ we all have access to incredible power. in every moment of every day we are given the chance to choose how we use the power we have.

In Corinthians, Paul reminds us that we are each uniquely made in the image of our God, created, called into being and gifted with individual gifts, which we are called to use for the common good. "Do not hide your light under a bushel," Jesus admonishes. False humility denies the gift, and in doing so, threatens to deny The Giver. Rather, let us dedicate time to discerning what our unique gifts are, to nurturing and nourishing them (gifts at one with the Spirit sometimes feel more like passions :-)), and finally, to bringing them to life in service to the community of faith we hold so dear ~ thereby claiming our membership in the body of Christ.

With the intention to be a fully functioning and gifted member in the Body, realized in and through membership in this community of faith, there is *nothing* under, with and through God that we cannot accomplish together. We empower ourselves and one another through the process of allowing the **energy** of the Holy Spirit to work through our **intention** to utilize the gifts God has bestowed upon us, to the best of our abilities.

Let us join together then, in bringing the transformative **Power** we create through this process of combining energy and intention to bear here in the Congregational Church of Plainville, UCC and in the world around us, today, tomorrow and in all the days to come.

No matter who you are, or where you are on life's journey, you *are* welcome here.

Amen.

In faith,  
Claire



# Music Notes



## Snowflake Fair Luncheon

Saturday, Nov. 14, 2009

11:00 – 2:00

Delicious sandwiches

Homemade chicken soup & chili

Hot dogs

Dessert

\*Sponsored by the Music Committee and choirs



## Wanted: All musicians!

Do you like to sing, ring bells, make new friends, and have FUN?

Then there's a spot for you in one of our choirs!

See Choir Director Matthew Bartlett or a member of  
The Music Committee.

**YOUTH CHOIR** begins Sunday,  
November 1<sup>st</sup> after Church School!  
Please join us!!!





**SHHHHHHHH.....Can you keep a secret?????????????**

Five years ago, when Shirley Brown turned 90, many of us shared in her surprise birthday celebration with coffee hour refreshments provided by Betsey and Russ.

*Amazingly, everyone kept the secret,* and Shirley was surprised.

Our challenge now is to do it again! Betsey and Russ invite all members of the church to **surprise Shirley for her 95<sup>th</sup> with cake and coffee on Sunday, December 13 in Kelsey Hall after church.** We hope you can make it!

By the way, Shirley's actual birthday is December 7<sup>th</sup>. She loves cards, especially funny ones, so if you can take a moment to send her one, she'd love it.

## MISSION-SOCIAL ACTION COMMITTEE NEWS

### **YOUR MSAC: Audrey, Carol, Joni, Mary, Pauline, Rinette, Robin, and Ruthe UnitedScrip – Ongoing Fundraiser**

**A BIG thanks for shopping with UnitedScrip!** This is our church's ongoing fundraiser.

**Christmas is just around the corner.** Please pick up **UnitedScrip** order forms in the narthex or in Kelsey Hall. Simply check which stores, restaurants, and gas stations that you frequent, then make a check out to our church and give the order form with a check to Carol after church in Kelsey Hall. Blockbuster just became our newest participating store. Be sure to purchase your store/gift cards for all your normal shopping needs. You will receive the full face value of the gift card, and our church will keep a percentage of the face value. It's win-win for all!

<b><i>Our Scrip Profits for 2009:</i></b>	<b><i>\$(2009 Budget Target: \$2,000)</i></b>	<b><i>% of Annual Budget Achieved</i></b>
Month of Jan:	\$48.80	
Month of Feb:	\$107.90	
Month of March	\$143.70	
Month of April	\$84.55	
Month of May	\$99.95	
Month of June	\$133.75	
Month of July	\$43.90	
Month of August	\$111.75	
Month of September	\$102.45	<b><i>Through September</i></b>
<b><i>Total Scrip Profit for 2009:</i></b>	<b><i>\$876.75</i></b>	<b><i>44% (target 75%)</i></b>

For September 20<sup>th</sup> through October 18<sup>th</sup>, we thank the following church families who participated: Astolfi, Bamberg, Blanchard, Boiczuk, Drachenberg, Edge, Fuller, Hodge, Hoerle, Karabin, Bonnie Mazurek, K. Mazurek, Letendre, Mowry, D. Pelletier, Peterson, Potter, and Seeds. Thanks!

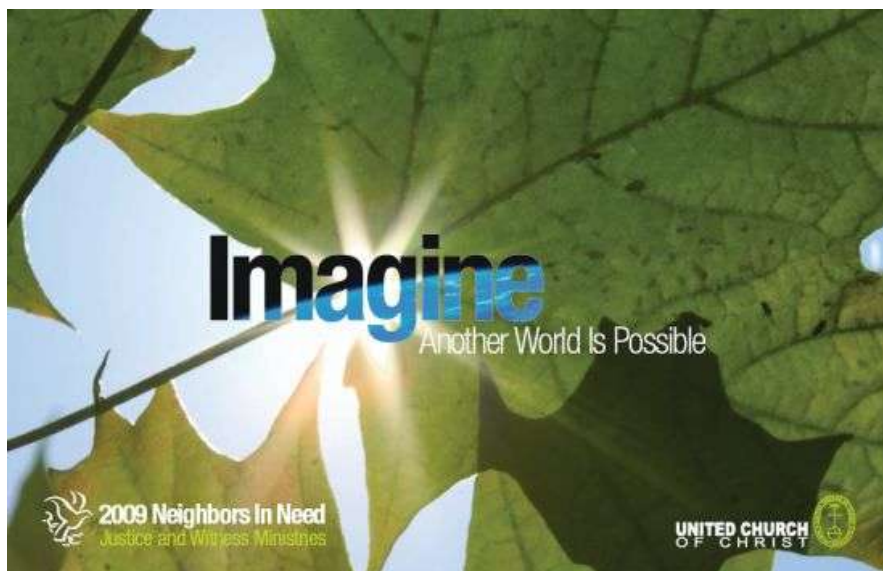
For any questions regarding our scrip fundraiser, please call Carol Peterson during the day at 747-5174.

### **Thank You for Contributing to *Special Earthquake and Tsunami Relief Efforts***

During worship on October 11<sup>th</sup>, the Message of Christian Concern brought the announcement that the United Church of Christ had set a goal of \$250,000 for relief, recovery, and rehabilitation of Southeast Asia and the Pacific Islands which were devastated by natural disasters in just three days. On Monday, Sept. 28<sup>th</sup>, Typhoon Ketsana roared across the Philippines, Vietnam and Cambodia; on Tuesday morning Sept. 29<sup>th</sup>, Samoa, American Samoa, and Tonga felt the effects of a tsunami triggered by a deep sea, 8.0-magnitude earthquake; and on Wednesday afternoon Sept. 30<sup>th</sup> into Thursday morning Oct. 1<sup>st</sup>, two earthquakes (7.6 and 6.8 on the Richter scale) hit Sumatra Island, Indonesia.

Our new UCC general minister and president, Rev. Geoffrey Black, said "Our heartfelt prayers go out to the people of Southeast Asia and the Pacific. We are especially mindful of our partner churches as they struggle to find the means to continue to do ministry in Jesus' name with all of the people there. I trust that we in the United Church of Christ will continue to be generous in sharing the gifts that God has given us to address the urgency of this situation."

We thank those worshipping on October 11<sup>th</sup> for contributing **\$90** toward the One Great Hour of Sharing's Special Natural Disaster Relief Fund.



**---Imagine Another World Is Possible ---**

**Thank You for Contributing to *Neighbors in Need Offering***

Thank you for your very generous donations to our church's annual United Church of Christ special offering, Neighbors in Need. On Sunday, October 4<sup>th</sup>, you donated **\$818** for this offering which supports ministries of justice and compassion throughout the United States, including the Council for American Indian Ministries, justice and advocacy, and direct service projects supported by Justice and Witness Ministries. Thank you for your support to our Neighbors in Need Offering. **Neighbors in Need helps make another world possible.**



**Coming --- Covenant to Care for Children Christmas Wish Tree**

Again this year, we hope to make Christmas just a little brighter for the children of our "adopted" Covenant to Care for Children DCF social worker Lynn Ludwin. During Advent, there will be a Christmas tree in the narthex decorated with tags. More coming in the December issue of the *Steeple*.

## Christmas Care Package Outreach for Webster Correctional Institution

Our Church received the following letter in October from Rev. Carol Salka, Chaplain of the Webster Correctional Institution in Cheshire, part of which follows:

*Dear Friends in Christ,*

*Greetings in the glorious name of our Lord and Saviour Jesus Christ! "For the grace of God that brings salvation has appeared to all men" (Titus 2:11). In a world that is increasingly unsettled and uncertain, Jesus is our blessed hope! Once again it is time to send out our Christmas Care Package letter of appeal on behalf of the inmates at Webster. Just yesterday I received the official approval to give out these packages again this year! Won't you join us in our Christmas Care Package Outreach?*

*For over sixteen years many of you have been donating items so that Webster inmates would receive a gift at Christmas – a tangible expression of God's love! This gift of a simple Ziploc plastic bag filled with hygiene items and food treats brightens the Christmas of those who must spend the holiday season shut away from family and loved ones. A practical gift, yet it goes a long way to remind prisoners that they are not forgotten at Christmas. Truly it is an outpouring of God's love expressed in these simple gifts of cheer and compassion. As the Christmas bags are distributed, the prisoners are reminded of the real reason for Christmas – God loves them and sent His Son Jesus to be their Savior.*

*As in past years, we ask that you give only the items listed below. Each bag must be the same and can only contain the following approved items:*

Soap	(bath size)
Toothbrush	(adult size)
Toothpaste	(large 6.2 oz)
Instant hot chocolate	(individual packets)
Hard candies	(individually wrapped)
Deodorant	(no glass or women's deodorant)

*"And the word became flesh and dwelt among us, and we beheld His glory...full of grace and truth" (John 1:14) "and of His fullness we have all received, and grace for grace" (John 1:16). As we have received from the fullness of God's grace, may we reach out with that grace by giving generously to those who are imprisoned and alone at Christmas. As we give to His beloved "least of these", it is a service of love to the One Who is our Source and Who gave His very life for us.*

*Thank you. May God abundantly bless you in your giving.  
In His service, Rev. Carol Salka, Chaplain*

Your Mission-Social Action Committee has placed a box in the narthex for collecting *only the items listed above*. **The last day for donating is Sunday, December 6<sup>th</sup>**. Thank you for your donations.

Remember those  
who are less  
fortunate



### Need COMMUNITY SERVICE Hours?????

Please see/talk to Rev. Claire (747-1901 #1), the Trustees, and/or Mrs. Cone and Mrs. Colley. We have plenty of opportunities for those looking for Community Service hours! And we are glad to help.

Do you have used books that you'd like to donate? Here are some suggestions from Pauline Mowry:



Go to [www.booksalefinder.com](http://www.booksalefinder.com) and you can see which libraries are having sales.

[www.bookbarnniantic.com](http://www.bookbarnniantic.com) will accept donations and will also pay you for some books.

The Southington Library also accepts used book donations.



## WORSHIP IN COLOR!

~Fall/Winter Theme Sundays ~

In continuation of our summer theme Sundays and the wearing of specific colors relating to these themes the Diaconate is inviting both young and old alike to participate in the following manner. We decided that it would serve both the purpose of "theme" and also as an education for church members if the colors for the themes tied into the Church Liturgical Year. We will be coordinating with the co-superintendents of the Church School to use these themes as a "teaching tool" in the Church School Program. You will be learning more about these themes as the year progresses through bulletin boards, worship bulletins and parent notices coming home with your children reminding you of the color theme on the following Sunday. Below you will find the schedule for the Sunday, Color and Theme being observed.

November 1 <sup>st</sup> ----- White	(All Saints Day)
November 22 <sup>nd</sup> --- Green & White	(Reign of Christ)
November 29 <sup>th</sup> ---- Blue or Purple	(Advent)
December 27 <sup>th</sup> -----White	(Baptism of Christ)
February 21st ----- Violet	(First Sunday in Lent)

Your Diaconate



### **MESSAGE FOR CHRIS POTTER**

A grateful Church celebrates the efforts of **Chris Potter, candidate for Eagle Scout**, who completely rebuilt the walkway and landscaped and painted the brick face of the Church Street side walk of our church! Chris, we deeply appreciate your efforts and congratulate ourselves and one another for the support you were given.

As you were raised in this church, we take pride in your accomplishments. As you gave this church the benefits of your time and attention in undertaking this project, we join our voices with those of the Day Care and *thank you* for all your good work on our behalf.

Your Church Family



# SNOWFLAKE FAIR

**Friday, November 13, 7pm-9pm**  
**Saturday, November 14, 9am-3pm**

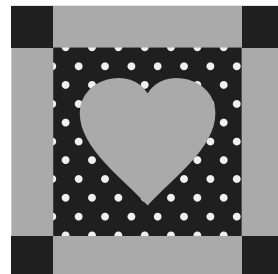
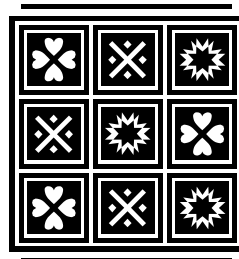
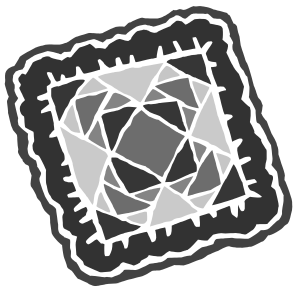
*Baked Goods and Candies*

**CRAFTS**

**Silent Auction**

# White Elephant Crafts

We're looking for people to help with setting up & tearing down, and working Friday or Saturday!!  
Please see Karen Hodge or Nicole Guglietta for more info.



**QUILTS NEEDED:** This year's Snowflake Fair will include a Quilt Exhibit. We will need to "borrow" many quilts to have a really impressive display. If you have a new or old quilt you would like to have displayed please call Fran Rose at 747-9989 for more information. We hope to have all plans for this event completed by Nov 1<sup>st</sup>. Thanks for your consideration, Fran.

“For forty years you sustained them in the desert; they lacked nothing”  
(Nehemiah 9:21)



## Will You Grant a Wish?

***There are many items  
the Church needs,  
Sized big and sized small.  
Choose from our Wish List;  
There’s something for all!***

\*\*\*\*\*

### The Church’s Wish List

Plumbing Repairs	\$	150.00	
Guest Minister Fee	\$	125.00	
Office Supplies	\$	50.00	<i>Use Scrip cards for Supplies and be twice as nice to our Church!</i>

*Donations of Scrip gasoline cards, Scrip grocery cards, and dietetic foods gratefully accepted by our Minister for assistance to those in need. Canned and dry goods are collected on Communion Sunday for the Plainville Food Pantry. Helping hands make a wonderful gift, too.*

\*\*\*\*\*

*If you’d like to contribute an item or even part of an item from our Wish List for the Church, please write the name of the item in the memo portion of your donation check. Your check can be made payable to the Congregational Church of Plainville and placed in the offering plate or in an envelope in the Church Office mail slot. Your donations are tax-deductible to the extent allowed by law.*

**May God Bless you for your generosity!**

## MARK YOUR CALENDARS! UPCOMING EVENTS

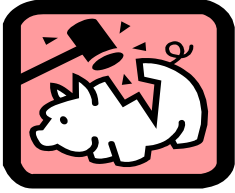
In the Spirit Coffee House- Sat. Dec 12<sup>th</sup>

Christmas Caroling –Dec 13<sup>th</sup> –

Service of Light-Dec 16<sup>th</sup>



## HOW ARE WE DOING? From the Finance Committee



	<u>Expenses</u>	<u>Income</u>
January	\$22,034.24	\$20,391.20
February	\$17,978.25	\$20,188.39
March	\$20,913.57	\$19,438.88
April	\$35,027.37	\$28,247.28
May	\$17,658.98	\$16,271.87
June	\$15,386.35	\$17,229.06
July	\$13,682.19	\$12,094.34
August	\$16,301.32	\$13,720.48
September	\$11,871.81	\$17,663.62
<b>TOTALS</b>	<b>\$158,982.27</b>	<b>\$147,581.50</b>



### **Warm Greetings to the Members of The Congregational Church of Plainville!!**

I am Barbara Steele and I am your new Church Secretary. I am very excited to be here and look forward to meeting everyone! I was born and raised in New Britain, and then moved to Bristol, and then to Southington. I currently live in Southington with my husband Jeff, my son Kyle who is 9 and my daughter Brynn who is 6 ½. We attend the Plantsville Congregational Church. If there is something I can do for you, please let me know! You can get messages to the office by:

- 1) Stopping by during OFFICE HOURS: 9:30 - Noon, MONDAY through FRIDAY. If I am not here, please leave your message in the slot in the office door.
- 2) Calling 747-1901 (# 1 for the minister; #2 for the secretary) and leaving a message
- 3) Emailing congregational9486@sbcgloblal.net.

**PLEASE NOTE: THIS IS THE ONLY EMAIL ADDRESS BY WHICH YOU WIL DIRECTLY REACH THE OFFICE.**

# Mystery Dinner

For those of you who have been waiting for information on the Mystery Dinner, you'll have to wait a bit longer as the date has been moved to January 23, 2010. Mark your calendar!



## Thrift Shop News

We need volunteers to work at the Thrift Shop on Wednesdays and Thursdays! Please call or see Fran(747-9989) or Bonnie(747-6483) to sign up.

## Fall Clean-up



Please lend a hand on Saturday November 21st for our Church's Fall Clean-up.

We will begin work at 8AM and typically work continues until 3 or 4PM.

Later arrivals are always welcome.

There is work to be done inside and outside. We will be working rain or shine.

There will be sign-up sheets in Kelsey Hall for some tasks to avoid having them done twice.

If you plan to work outside, bring your favorite rake, leaf blower or tarp.

Indoor cleaning supplies will be provided.

Thanks,  
Trustees



## Christmas in Fredericksburg: A Christmas Play for All Ages

Our Director of Choirs, Matthew Bartlett, has written an original work: *Christmas in Fredericksburg*, and you and your children are invited to premier this piece! The play sets a scene that takes place in December of 1862, and in it we follow the paths of many people as they struggle through the Civil War after the Union defeat at Fredericksburg. Some of the major cast includes Robert E. Lee, Joshua Lawrence Chamberlain, Abraham Lincoln, Mary Todd Lincoln, Stonewall Jackson, Ulysses S. Grant and many other Civil War characters. If you would like to be a part of this Christmas program please contact Matthew Bartlett. All who come will have a part. The performance is scheduled for the afternoon of December 20th; please be sure that date is free for you before you sign up! Friends are also welcome. Thank you for your consideration, interest and support.

**Our heartfelt sympathies to those who have lost family members in October:**

To the friends and families of: Dena Chojnicki, Trojanowski, David Morris, Jim Heekin and Helen McKernan.



~~~~~  
***In our Prayers this month, we remember:*** Shirley Brown, Marissa & Geraldine, Steve, Joanna & Annie Vastola, Bonnie & Dave Mazurek, Larry, Aimie & Matthew Mosher, Alexa Pugh, Richard “Duke” Bird, Don Williams, Bunny Colter, Cathy Valvo, Burton Johnson, Ruth Pater, Georgie, Jane Kowalchuk, Teresa Townsend, Nichols/Parker Families, Rochelle, David Crabtree, Judy Beausoleil, Michael Fraychak, Craig Mackenzie, Eleanor Kordes, Jessie Flanders, Luke Santhouse, Dick and Joan Dante, Marcia and Woody Winslow, Gary Hubbell, Don Barrows, Dorothy “Dot” Haley, Maria Schatz, Davida Foy Crabtree, Jeff Schaefer, Peg Hoerle, Peg Young, Mary Devine, Gordon McCann, Jeane Pierson, ***and the families of*** Helen McKernan, Jim Heekin, David Morris, T.J. Trojanowski, Dena Chojnicki, Clento Guidi, Mary Janota, Barbara Fitzmaurice, Janet Grabowski, Harold and Alan Fish, Joe Silverio, as well as members and friends serving in the military: Spencer Pelletier, James Palmer, Gabriel Smykla, and Mark Terrill.

~~~~~  
We received a “thank you” from Dave & Bonnie Mazurek in October:

Dear All, Thank you so much for the prayers, support and many cards during Mom’s illness and passing. It was comforting and heartwarming to know our church family was there for us during this difficult time. Bless you all, Dave and Bonnie Mazurek

~~~~~  
**Thank You from Covenant to Care - DCF Social Worker**

In late September, we received the following email from Lynn Ludwin, our DCF Social Worker who is in covenant with our church through Covenant to Care for Children’s Adopt-A-Social Worker Program.

*Dear Rev. Dr. Claire W. Bamberg,*

*I would like to thank you and the congregation for all of your hard work and dedication to the children of our community. The school book bag drive was great and such a need for the children, especially during these economic hard times. The children were very appreciative, and they loved their school bags and all of the school supplies.*

*Thanking you and the Congregation.*

*Lynn*

We wish a very *“Happy Birthday”* to the following members of our congregation who have November birthdays: Spencer Pelletier (11/2), Claranne Parker (11/3), Marianne Wright (11/4), Holly Drachenberg (11/4), Justin Wolf Meyers (11/4), Matthew Thomas (11/4), James Parker(11/9), Ruthe Boiczuk (11/13), Tony Yanez (11/17), Daniel Pater (11/18) and David Mazurek (11/30).



We also wish a very *“Happy Anniversary”* to the following members with November anniversaries: Kelly Marshall (11/3), Brian & Kristen Beausoleil (11/4), Al & Linda Valeri (11/4), Jim & Claranne Parker (11/17), and Al & Ruth Seeds (11/21).

---

### MILESTONES AND HIGHPOINTS

|                                         |                                                            |
|-----------------------------------------|------------------------------------------------------------|
| New Members                             | None reported                                              |
| Reactivated                             | Bobbie Turcotte                                            |
| Transfers or terminations of membership | None reported                                              |
| Inactive                                | None reported                                              |
| Deaths                                  | Helen McKernan 10/10/09                                    |
| Marriages/Unions                        | None Reported                                              |
| Births                                  | Antonietta(Annie) Ruth Vastola,<br>Nicolet Marie-Ange Edge |
| Baptisms                                | None reported                                              |

---

# CHURCH CALENDAR



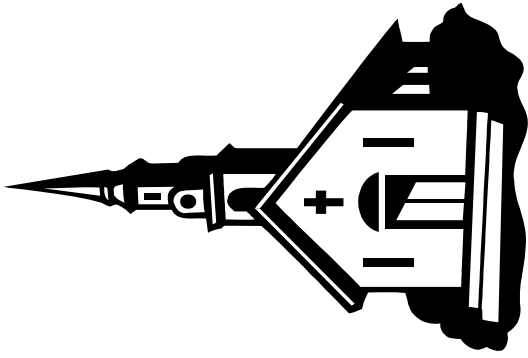
November 2009



**\*\*Steeple articles due by: November 20, 2009\*\***

| Sunday                                                                                                                                                                 | Monday                           | Tuesday                                                                                                    | Wednesday                                                        | Thursday                                                                                                                                             | Friday                                                                                                                 | Saturday                                                                                                                                           |
|------------------------------------------------------------------------------------------------------------------------------------------------------------------------|----------------------------------|------------------------------------------------------------------------------------------------------------|------------------------------------------------------------------|------------------------------------------------------------------------------------------------------------------------------------------------------|------------------------------------------------------------------------------------------------------------------------|----------------------------------------------------------------------------------------------------------------------------------------------------|
| <b>1</b><br>9:00 am - Choir Rehearsal<br>10:00 am – Worship<br>11:15 am – Youth Choir<br><br>Church Budget Meeting-after Church                                        | <b>2</b><br>10:00 am<br>AI Anon  | <b>3</b><br>10:30 am - AA<br>6:00 pm- New Member Class<br><br>7:00 pm – AA<br><br>7:15 pm- Committee Night | <b>4</b><br>5-7pm - Food for Friends<br><br>7:30 pm- Adult Choir | <b>5</b><br>5:15 pm-Music Committee<br>6:00 pm-Bell Choir<br><br>7:30 pm - NA                                                                        | <b>6</b>                                                                                                               | <b>7</b><br>6:30 pm – NA                                                                                                                           |
| <b>8</b><br>9:00 am - Choir Rehearsal<br>10:00am – Worship<br><br>7:30 pm - Recovery                                                                                   | <b>9</b><br>10:00 am<br>AI Anon  | <b>10</b><br>10:30 am – AA<br><br>7:00 pm - AA                                                             | <b>11</b><br>5-7pm Food for Friends<br><br>7:30 pm- Adult Choir  | <b>12</b><br>6:00 pm-Bell Choir<br><br>7:30 pm – NA                                                                                                  | <b>13</b><br><br>Snowflake Fair!!!! | <b>14</b><br><br>Snowflake Fair!!!!<br>6:30 pm - NA             |
| <b>15 Stewardship Sunday</b><br><br>9:00 am - Choir Rehearsal<br>10:00 am – Worship-<br><br>7:30 pm-Recovery                                                           | <b>16</b><br>10:00 am<br>AI Anon | <b>17</b><br>10:30 am - AA<br><br>7:00 pm – AA<br><br>7:30 pm- Church Council                              | <b>18</b><br>5-7pm Food for Friends<br><br>7:30 pm- Adult Choir  | <b>19</b><br>6:00 pm-Bell Choir<br>6:30 pm - NA Administrative<br>7:30 pm – NA                                                                       | <b>20</b>                                                                                                              | <b>21</b><br>Fall Clean Up<br>8-4 pm<br><br>6:30 pm - NA      |
| <b>22</b><br>9:00 am - Choir Rehearsal<br>10:00am - Worship<br><br>7:00 pm- Ecumenical Thanksgiving Service, Church of Our Savior, Episcopal<br><br>7:30 pm - Recovery | <b>23</b><br>10:00 am<br>AI Anon | <b>24</b><br>10:30 am – AA<br><br>7:00 pm - AA                                                             | <b>25</b><br>5-7pm Food for Friends<br><br>7:30 pm- Adult Choir  | <b>26</b><br>HAPPY THANKSGIVING!<br><br>* *<br>Office is Closed | <b>27</b><br>1                                                                                                         | <b>28</b><br>9:00 am – Advent Decorations<br><br>6:30 pm – NA |
| <b>29</b><br><b>1<sup>st</sup> Sunday of Advent</b><br><br>9:00 am - Choir Rehearsal<br><br>10:00 am - Worship                                                         | <b>30</b><br>10:00 am<br>AI Anon | <b>1</b><br>10:30 am - AA<br><br>7:00 pm - AA                                                              | <b>2</b><br>5-7pm Food for Friends<br><br>7:30 pm- Adult Choir   | <b>3</b><br>6:00 pm-Bell Choir<br><br>7:30 pm - NA                                                                                                   | <b>4</b>                                                                                                               | <b>5</b><br>6:30 pm - NA                                                                                                                           |

**A  
View  
from  
THE  
STEEPLE**



**November 2009**

*The Congregational Church of Plainville, UCC  
130 West Main Street  
Plainville, CT 06062*

Change Service Requested

**PLAINVILLE THRIFT SHOP**

Phone: 747-2418

**HOURS**

Wednesday: 10 am – 4 pm

Thursday: 10 am – 4 pm

Saturday: 9:30 am – NOON

Clothing and household items in  
good or new condition.  
Donations accepted during business  
hours ONLY.